



Development of a Student-led Medical Spanish Program

Jason Howell MS3, Erin Stratta MS3



Introduction

- The medical community has a growing number of Latino patients with “limited English proficiency,” and that number is projected to grow
- Medical students have increasing interest & a need for medical Spanish training; many have prior language experience
- Most medical schools have no formal medical Spanish classes
- Students from Loyola designed a longitudinal program to provide Spanish language training for medical students

Language Application

- Clerkships
- Patient Interpretation
- Mentors
- Volunteer

Language Evaluation

- Standardized Patient Encounters
- Level-specific written exams
- Certification

Language Learning

- Class Instruction
- Teaching Elective
- International Service Immersion (ISI)

Teaching Elective

M1/M2 students who volunteer to teach Spanish also enroll in the Medical Spanish Teaching elective. Typically, 15-20 teachers participate each year. Those completing the program receive 2.0 hours of elective credit. To complete the program, students must:

- Participate in 4 didactic courses on teaching theory,
- Teach fellow medical students for over 20 hours over a 2 year period and submit a lesson plan each class taught
- Commit 2-4 hours per week to the work of teaching, coordinating, & developing lesson plans for weekly classes
- Give and receive formal feedback from fellow students & teachers



Language Classes

Classes are organized based on individual’s Spanish language abilities and classes are held for one hour per week outside of regular school activities. Class times vary, but is designed to meet the needs of most of the 50-100 participating M1/M2s students. Other students or members of the Loyola health system are welcome to attend.

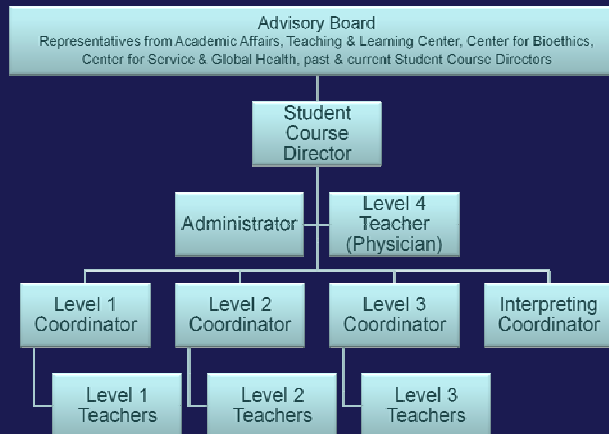
Four different language levels are offered:

- **Beginner:** Essential phrases, basic terminology & relevant questions
- **Intermediate:** Patient history & basic conversational skills
- **Advanced:** Full patient history, physical exam, & conversation
- **Advanced-high:** Advanced clinical topics & patient care scenarios



Curriculum :

- Designed by student teachers and tailored to class needs/feedback
- Based on a level-specific Medical Spanish textbook to enable outside learning and consistent teaching
- Topics parallel M1/M2 curriculum where possible
- Cultural competency component included in every lesson plan
- Full Curriculum is available online for anyone in the LUHS community
- Includes simulated Standardized Patient (SP) exam in Spanish
- Encourages students to shadow LUHS Spanish interpreters in the hospital setting



Practical Application

Program leaders help connect students to opportunities designed to help students practice & strengthen their language skills. Anyone from the Loyola community may choose to access these events/opportunities.

- Volunteer Interpreting at area clinics
- Pairing with Physician mentors that work primarily with Spanish-Speaking Patients
- Mentorship by upperclassmen with similar language skills
- Referral to area organizations providing opportunities to practice Spanish
- Immersion experiences/volunteer work in Spanish-speaking countries
- Priority placement at Spanish-speaking sites for clerkships/electives
- Preference at Spanish-speaking international rotation sites
- Research within Latino Health and bilingual healthcare
- Communication regarding work, study, policy, research, and career information in Latino Health



Spanish-Speaking Certification

Certification of bilingual medical Spanish-speaking abilities is available to all students who plan to provide care for patients in speak Spanish during their careers. The certification is organized and run through Loyola SOM, and is recognized by LUHS.

Certification Exam Components:

- Fluency in speech/comprehension, medical vocabulary, cultural competency in full spectrum patient care, evaluated by:
 - Clinician Cultural and Linguistic Assessment & Qualified Bilingual Staff Assessment –Phone exams administered by ALTA Language Services.
 - Spanish Objective Standardized Clinical Exam. Developed and administered by the Loyola SOM.

Students who earn the Certification receive:

- “Hablo Español” ID tags for use within the Hospital
- Formal acknowledgement of their Spanish skills on their transcript
- Priority placement at Spanish-speaking clerkship sites