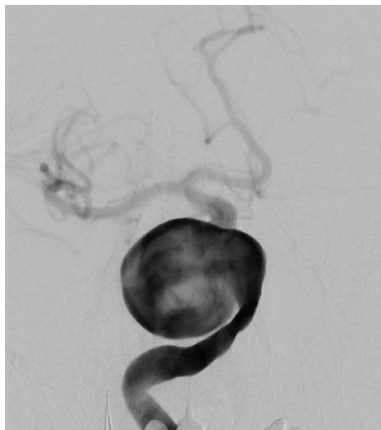


FELLOWSHIP PROGRAM

The goal of the NES Fellowship at Loyola University Medical Center (LUMC) is to prepare post-residency, neurosurgeons, neurologists, and/or radiologists for a competitive career in minimally-invasive NES techniques. The fellowship is a one-year, comprehensive training program encompassing all facets of NES.



The fellow will learn a wide breadth of NES techniques, including: diagnostic angiography; aneurysm treatment; embolization of AVMs, dAVFs, and tumors; epistaxis and oropharyngeal hemorrhage embolization; carotid revascularization; mechanical thrombectomy in acute ischemic stroke; dural venous sinus manometry and stenting; and treating cerebrovascular pathologies with SRS.



NEUROENDOVASCULAR SURGERY

Commitment to patient care, dedication to research, and training exceptional candidates.



LOYOLA UNIVERSITY MEDICAL CENTER

2160 S 1st Ave, Maywood, IL 60153

1 (708) 216-3208



LOYOLA UNIVERSITY MEDICAL CENTER

Department of Neurological Surgery NeuroEndovascular Surgery (NES) Fellowship

HOW TO APPLY

Academic Year:	2021
Duration:	12 months
Application Deadline:	January 31, 2019
Percent of Fellowship Devoted to Clinical Care (Operative and Non-operative):	90%
Teaching:	10%
Research:	Varies depending on level of interest

For additional information about LUMC or the NES Fellowship, please email the Fellowship Coordinator: (Alba Isaj) at: Albana.Isaj@luhs.org.

REQUIREMENTS

Candidates must have graduated from an ACGME-certified neurosurgery, neurology, or radiology residency program and successfully completed the preliminary requirements for a NES fellowship.

CURRICULUM

The fellow will perform cases and assist with the clinical care of neurovascular patients at the main LUMC campus as well as the nearby Hines Veterans Administration (VA) Hospital and Silver Cross Hospital (SCH).

Expectations for the fellow include daily rounding and participation in all aspects of neurovascular patient care; participation in Loyola core curriculum educational conferences; coordination of a weekly neuro-endovascular discussion-based conference; attendance and presentation at National Meetings; assisting residents in catheter-based diagnostic angiography training; and participation in general call.

ABOUT THE PROGRAM DIRECTOR



Dr. Reynolds is an Assistant Professor of Neurosurgery at Loyola with a joint appointment in Radiology. He also directs the NES program at Silver Cross Hospital. Dr. Reynolds completed his medical and graduate training at Northwestern University and his residency training at Washington University in St. Louis (Barnes-Jewish Hospital). Following residency, he completed clinical fellowships in cerebrovascular microsurgery and endovascular neurosurgery. He specializes in the microsurgical and endovascular treatment of vascular disorders of the brain and spine.

CORE FACULTY

Douglas Anderson, M.D., Professor & Chair (Neurosurgery)

Jose Biller, M.D., Professor & Chair (Neurology)

Suresh Reddy, M.D., Chief of Neuroradiology (Radiology)

Matthew Reynolds, M.D., Ph.D., Assistant Professor (Neurosurgery)

Jordan Rosenblum, M.D., Professor & Chair (Neuroradiology)

Joseph Serrone, M.D., Assistant Professor (Neurosurgery)



ABOUT LOYOLA UNIVERSITY MEDICAL CENTER

Loyola University Health System is a quaternary care system based in Chicago's western suburbs (LUHS) and a member of Trinity Health, one of the country's largest health systems. LUHS includes Loyola University Medical Center (Loyola), an academic hospital with 547 licensed beds on 61 acres in Maywood, Gottlieb Memorial Hospital, a community hospital with 254 licensed beds on a 36-acre campus in Melrose Park, and a large ambulatory network of clinics throughout Cook, Will and DuPage counties offering primary and specialty care.

Loyola is located 13 miles west of Chicago's Loop and 8 miles east of Oak Brook, IL. Loyola is a renowned medical center featuring a Level 1 Trauma Center, a Burn Center, a Center for Heart & Vascular Medicine, the Cardinal Bernardin Cancer Center, and Loyola Outpatient Center. Loyola shares its campus with academic partners Loyola University Chicago Stritch School of Medicine and Loyola University Chicago Marcella Niehoff School of Nursing, as well as the Loyola Center for Fitness. The Gottlieb campus includes the hospital, a Professional Office Building housing 150 private practice clinics, an Adult Day Center, the Gottlieb Center for Fitness, Loyola Center for Metabolic Surgery & Bariatric Care and the Loyola Cancer Care & Research at the Marjorie G. Weinberg Cancer Center at Melrose Park.

Trinity Health is one of the largest multi-institutional Catholic healthcare delivery systems in the nation. It serves people and communities in 22 states from coast to coast with 93 hospitals and 120 continuing care locations -- including home care, hospice, PACE and senior living facilities -- that provide nearly 2.5 million visits annually.

The Department of Neurological surgery performs approximately 1,000-1,100 cases per year.